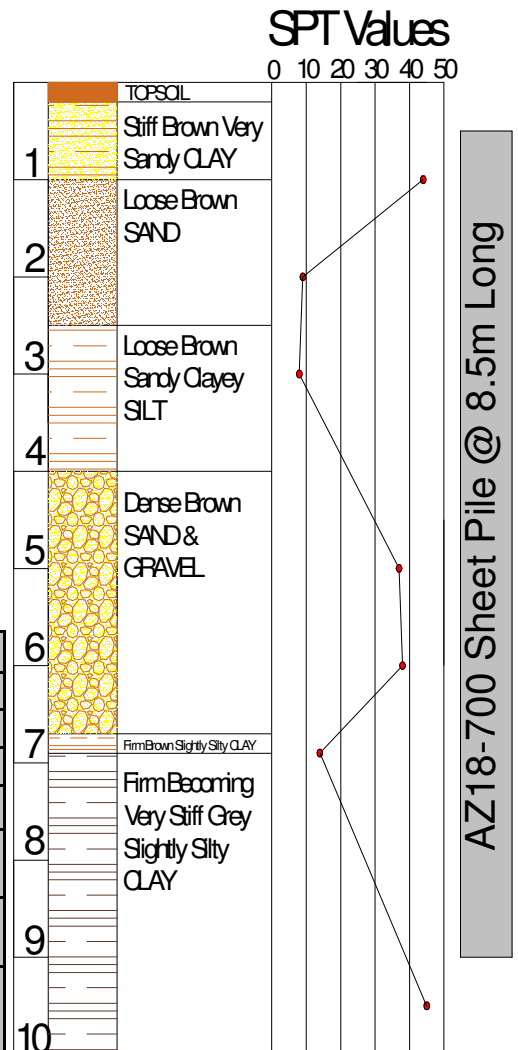


Berryrange Leader Rig Installation & Pre-Augering with Silent Piler



Project Location	Upminster Cemetery Extension - Phase 1
Type of Project	Cemetery Extension - water cut off cofferdam
Client	Birse Civils on behalf of Havering Borough Council
Duration of Work	July '13 — Aug '13
Purpose of Piling	Permanent cofferdam for water cut off
Type of Pile	AZ18-700 Steel Sheet Pile, in Jagged Wall profile & PU18, (Silent Piler); L= 8.0 — 8.5m
Piling System, (Inst)	ABI 13/16 Leader - Rig Pre-Augering & Vibro-installation. Silent Piler used near to existing Cemetery
Particulars	Pre-Augering works carried out for the Silent Piling works. Vibro Installation & Drop Hammer Back driving on remainder. Special sealant, (Roxan) used in clutches to ensure watertightness.

Borehole Information



**Sheet Piling, Construction
& Professional Design
Services**

Unit 7,
The Oaks Business Village
Revenge Road,
Lordswood,
Kent,
ME5 8LF

TEL: 01622 794460
FAX: 01634 863016
Enquiries@berryrange.com
www.berryrange.com

