

JZ100 Silent Piler System



Description:

The “Zero” Piler is a non-polluting method with the effective use of the total land area being achieved by driving adjacent to structures.

Considering the increase in speed and safety associated with this method, using high quality steel piles allows the user to complete the task in a shorter time span and thus reduce costs

Benefits:

The benefits of the JZ100 are numerous. As well as the reduction in noise and vibration due to the piler's ability to *push* piles into the ground, working close to the ground without the need of trestles and wailings and working adjacent to an existing building, greatly reduces the risk of injury. Additionally the piler's capacity to move itself along the top of the first piles installed reduces the need for heavy craneage and brings the total cost of construction down.



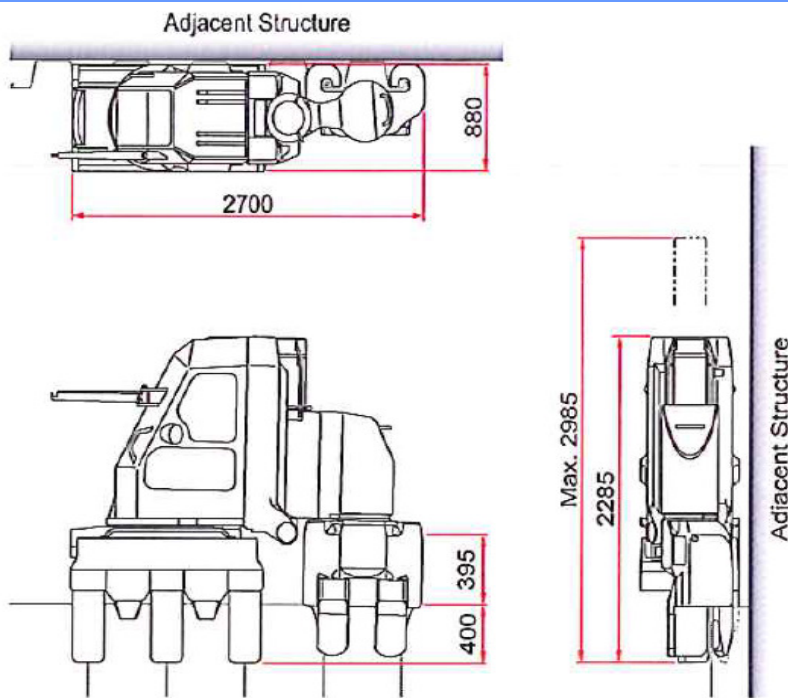
**Sheet Piling, Construction
& Professional Design
Services**

Unit 7,
The Oaks Business Village
Revenge Road,
Lordswood,
Kent,
ME5 8LF

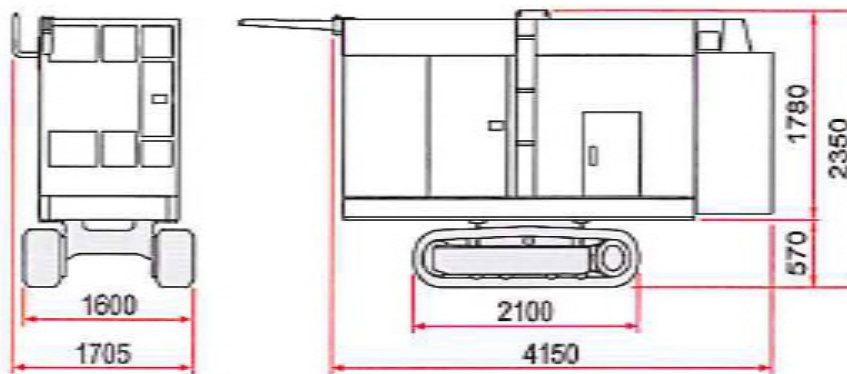
TEL: 01622 794460
FAX: 01634 863016
Enquiries@berryrange.com
www.berryrange.com



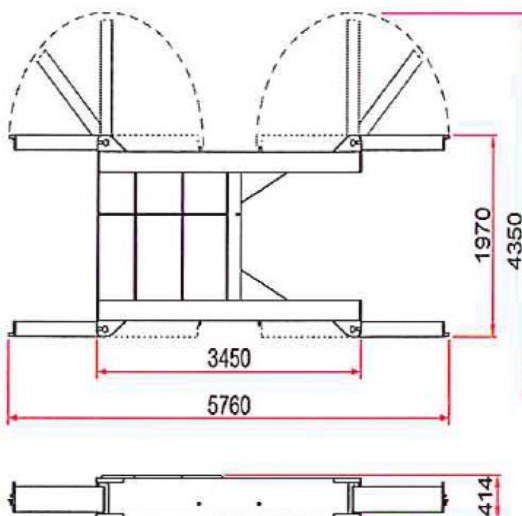
JZ100 Silent Piler System



Specification	
Max. Installation Force	1,000 kN (102 ton)
Max. Extraction Force	1,400 kN (143 ton)
Stroke	700 mm
Pressing-in Speed	1.5 - 35.2 m/min
Drawing-out Speed	1.1 - 26.0 m/min
Rated Output	147 kW (200 PS)
Sheet Pile Range	SM-J Pile (600mm pitch)
Movement	Self-moving
Operation	Radio Control
Weight	7,700 kg

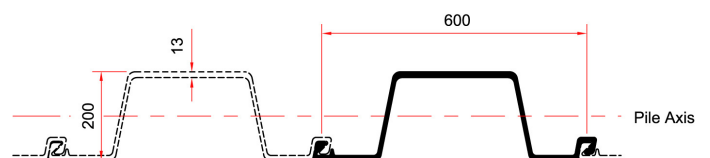


Specification (Power Unit)	
Power Source	Diesel Engine 147 kW (200 PS)
Fuel Tank	350 L
Hydraulic Oil	550 L
Noise Level at 7m	69 dB(A)
Weight	4,500 kg
Specification (Crawler)	
Crawler Operation	Remote Control
Moving Speed	1.4 km/h
Weight	1,000 kg
Specification (Multi Box)	
Weight	600 kg
Total Weight	6,100 kg



Specification	
Weight	1,800 kg

SM-J Pile (600 pitch)



	1 Sheet Pile	Per Metre
Sectional Area	111.2 cm ²	185.3 cm ² /m
Mass	87.3 kg/m	145.0 kg/m ²
Moment of Inertia	7,250 cm ⁴	12,080 cm ⁴ /m
Sectional Modulus	705 cm ³	1,175 cm ³ /m